

# CONTINUOUS FENCE PANELS AND RAILS

**MATERIALS:**

14 GAUGE  
**1 1/4"**  
ROUND TUBE

13 GAUGE  
**2"**  
ROUND TUBE

**COLOUR OPTIONS AVAILABLE:**



STANDARD

2W's popular Continuous Fence Panels & Rails offer property owners a durable, cost effective, and easy to install solution to property fencing. The Continuous Fence Panels come standard in 20 foot lengths, 4 foot high, with five vertical cross member reinforcement rails per panel. The ends of the panels come "Swaged" so that each panel easily connects to one another. End caps, 145 degree round corners, and 90 degree corners are available.

## FEATURES:

- **SWAGED ENDS TO FIT ONE PANEL CONTINUOUSLY INTO ANOTHER**
- **UTILIZES PANEL CLAMPS TO FIX PANEL TO FENCE POSTS**
- **VERTICAL FLAT BAR REINFORCEMENTS**
- **STANDARD UNPAINTED FOR NATURAL PATINA**
- **END CAPS, DIRECTIONAL CORNERS, AND OTHER OPTIONS AVAILABLE**



## DESIGN VARIATIONS:



**4'**  
TALL

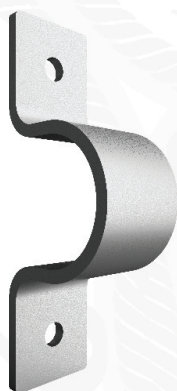
**5**  
RAILS

**20'**  
LENGTH

**4'**  
TALL

**6**  
RAILS

**20'**  
LENGTH



**POST CLAMP**

# TECHNICAL SPECIFICATIONS

## SPECIFICATIONS

### Continuous Fence - Panels

Unit #	Description	Length (in)	Height (in)	Weight (lbs)
W90004600-Unpainted	Continuous Fence 420 Panel	244.00	46.75	125.68
W90004606-Unpainted	Continuous Fence 420 Panel 6 Rail	244.00	46.75	146.68

Unit #	Description	Height (in)	Weight (lbs)
W90004601-Unpainted	Continuous Fence Panel Clamp		0.19
W90004602-Unpainted	Continuous Fence 400 Panel Corner	48.75	12.90
W90004605-Unpainted	Continuous Fence 400 Round Corner	48.75	14.00
W90004603-Unpainted	Continuous Fence 400 End Cap	48.75	8.95

Unit #	Description	Length (in)	Height (in)	Weight (lbs)
W90005019-Dark Grey	Continuous Rail 23'	276.00	2.00	44.51
W90005019-Dark Grey	Continuous Rail 23'	276.00	2.00	44.51

Unit #	Description	Weight (lbs)
W90005025-Dark Grey	Continuous Rail Clamp	0.28